



- PRODUCT FEATURES**
- Manual steering
 - Push type

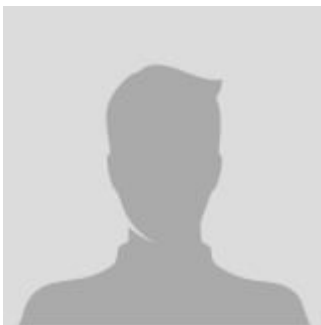
Pallet Jacks and Stackers

Semi-electric Stacker - Forkover - 2200lbs

The main parameter

MODEL	CBS06	CBS10	CBS15
Drive motor	1.6 kW	1.6 kW	1.6 kW
Mast type	Standard 2-Stage	Standard 2-Stage	Standard 2-Stage
Type	Adjustable straddle	Adjustable straddle	Adjustable straddle
Fork Size (thickness/width/length)	1 / 4 / 36 (42) inch	1 / 4 / 36 (42) inch	1 / 4 / 36 (42) inch
Overall length	58 inch	58 inch	58 inch
Operator type	Walkie	Walkie	Walkie
Engine type	Semi-electric	Semi-electric	Semi-electric
Battery Voltage/Rated capacity	12/100 V/Ah	12/100 V/Ah	12/100 V/Ah
Load Capacity	1433 pounds	2205 pounds	3307 pounds
Configuration Number	K160	K160	K160
Overall width	46 51 57 inch	46 51 57 inch	46 51 57 inch
Load Center	16 inch	16 inch	16 inch
Standard Lift Height	63 98 118 inch	63 79 98 118 138 inch	63 79 98 118 138 inch

CONTACT INFORMATION



Lift North America Inc.
Address 6180 Ordan Dr, Mississauga,
 ON L5T 2B3
Contact Person: Derek Radford
Email: derek@liftnorthamerica.com
Phone: [416 456 4668](tel:4164564668)