

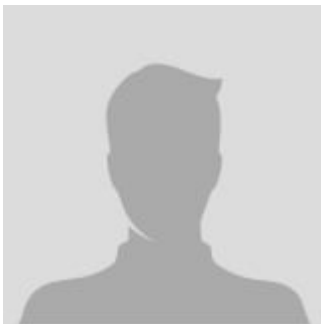


## **Electric Narrow Aisle Electric pallet truck (Lithium battery) - Walk-behind - 3300lbs**

### **The main parameter**

| <b>MODEL</b>                   | <b>CBD15J-LI</b> |
|--------------------------------|------------------|
| Overall height (with handle)   | 24 / 47.7 inch   |
| Controller                     | CURTIS           |
| Lift motor                     | 0.8 kW / None    |
| Drive motor                    | 0.75 kW          |
| Overall length                 | 63.6 inch        |
| Operator type                  | Walkie           |
| Engine type                    | Electric         |
| Max. Lifting height            | 7.9 inch         |
| Battery Voltage/Rated capacity | 24/35 V          |
| Overall width                  | 21.7 / 27 inch   |
| Load Center                    | 24 inch          |
| Rated Capacity                 | 3300 pounds      |

### **CONTACT INFORMATION**



**Lift North America Inc.**  
**Address** 6180 Ordan Dr, Mississauga,  
ON L5T 2B3  
**Contact Person:** Derek Radford  
**Email:** [derek@liftnorthamerica.com](mailto:derek@liftnorthamerica.com)  
**Phone:** [416 456 4668](tel:4164564668)