



**PRODUCT FEATURES**

- Triple stage mast
- Side shift
- Rider platform with Hip Restraint

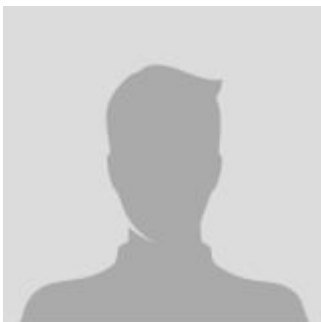
## Pallet Jacks and Stackers

### Electric Stacker - Mast Reach - 3000lbs

### The main parameter

MODEL	CQDM12/15	CQDM12/15
Controller	ZAPI (Option CURTIS)	ZAPI (Option CURTIS)
Lift motor	DC3 kW	DC3 kW
Steering motor	DC 0.15 kW	DC 0.15 kW
Drive motor	AC 1.5 kW	AC 1.5 kW
Mast type	Standard 2-Stage	Full free 3-stage
Type	Reach	Reach
Fork Size (thickness/width/length)	1.5 / 4 / 42 inch	1.5 / 4 / 42 inch
Overall length	96   114 inch	96   114 inch
Operator type	Stand-on	Stand-on
Engine type	Electric	Electric
Battery Voltage/Rated capacity	24/280 V/Ah	24/280 V/Ah
Load Capacity	2645.5   3307 pounds	2645.5   3307 pounds
Configuration Number	810	810
Overall width	43 inch	43 inch
Load Center	20 inch	20 inch
Standard Lift Height	55   79   98   118   130   142   157 inch	98   146   153.5   165   177   197 inch

### CONTACT INFORMATION



**Lift North America Inc.**  
**Address** 6180 Ordan Dr, Mississauga,  
 ON L5T 2B3  
**Contact Person:** Derek Radford  
**Email:** [derek@liftnorthamerica.com](mailto:derek@liftnorthamerica.com)  
**Phone:** [416 456 4668](tel:4164564668)