



- CPD15/18/20-GB2U(P)

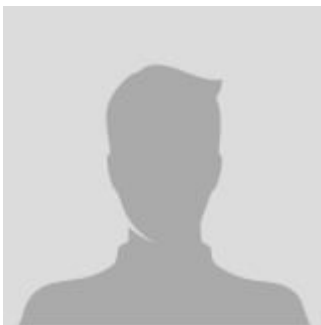
Electric Lift Trucks

3 Wheel - US Battery Compartment - 3000 to 4000lbs

The main parameter

MODEL	CPD15	CPD18
Total weight with minimum weight battery	6925 pounds	7612 pounds
Battery (48 volt)	30.5 Kwh / 660 Ah	35.8 Kwh / 770 Ah
Battery (36 volt)	30.6 Kwh / 880 Ah	38.2 Kwh / 1100 Ah
Engine type	Electric	Electric
Outside Turning Radius	58 inch	62 inch
Length To Fork Face	72.5 inch	76.7 inch
Mast Tilt Angle, F/R	5/7°	5/7°
Wheelbase	51 inch	55 inch
Load Capacity	3000 pounds	3800 pounds
Configuration Number	SQ-GB2U(P)	SQ-GB2U(P)
Overall width	42 inch	44 inch
Load Center	24 inch	24 inch
Standard Lift Height	130 inch	130 inch

CONTACT INFORMATION



Lift North America Inc.
Address 6180 Ordan Dr, Mississauga,
 ON L5T 2B3
Contact Person: Derek Radford
Email: derek@liftnorthamerica.com
Phone: [416 456 4668](tel:4164564668)