



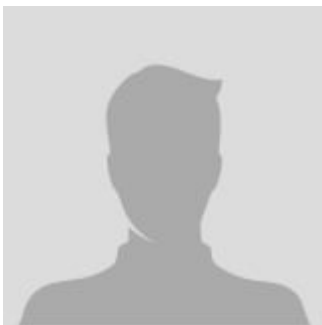
- PRODUCT FEATURES**
- Manual steering
 - Push type

Pallet Jacks and Stackers Fork Over (CBS - Z160)

The main parameter

MODEL	CBS06	CBS10	CBS15
Drive motor	1.6 kW	1.6 kW	1.6 kW
Mast type	Standard 2-Stage	Standard 2-Stage	Standard 2-Stage
Type	Fork over	Fork over	Fork over
Fork Size (thickness/width/length)	2 / 6 / 45 (39) inch	2 / 6 / 45 (39) inch	2 / 6 / 45 (39) inch
Overall length	62 inch	62 inch	62 inch
Operator type	Walkie	Walkie	Walkie
Engine type	Semi-electric	Semi-electric	Semi-electric
Battery Voltage/Rated capacity	12/100 V/Ah	12/100 V/Ah	12/100 V/Ah
Load Capacity	1433 pounds	2205 pounds	3307 pounds
Configuration Number	Z160	Z160	Z160
Overall width	29 inch	29 inch	29 inch
Load Center	20 inch	20 inch	20 inch
Standard Lift Height	63 98 118 inch	63 79 98 118 138 inch	63 79 98 118 138 inch

CONTACT INFORMATION



Lift North America Inc.
Address 6180 Ordan Dr, Mississauga,
 ON L5T 2B3
Contact Person: Derek Radford
Email: derek@liftnorthamerica.com
Phone: [416 456 4668](tel:4164564668)