



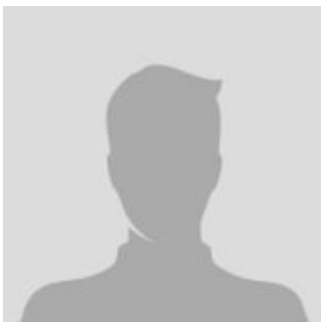
## Pallet Jacks and Stackers

### Electric Stacker - Counterbalanced - 2500lbs

#### The main parameter

<b>MODEL</b>	<b>CPD12</b>	<b>CPD12</b>
Controller	CURTIS	CURTIS
Lift motor	DC3 kW	DC3 kW
Steering motor	DC 0.15 kW	DC 0.15 kW
Drive motor	AC 1.5 kW	AC 1.5 kW
Mast type	Standard 2-Stage	Full free 2-stage
Type	Counterbalanced	Counterbalanced
Fork Size (thickness/width/length)	1.5 / 4 / 42 inch	1.5 / 4 / 42 inch
Overall length	98.5   118.5 inch	98.5   118.5 inch
Operator type	Walkie / Stand On	Walkie / Stand On
Engine type	Electric	Electric
Battery Voltage/Rated capacity	24/270 V/Ah	24/270 V/Ah
Load Capacity	2645.5 pounds	2645.5 pounds
Configuration Number	970	910
Overall width	40 inch	40 inch
Load Center	20 inch	20 inch
Standard Lift Height	5   79   98   118   130   142 inch	98   118   130 inch

#### CONTACT INFORMATION



**Lift North America Inc.**  
**Address** 6180 Ordan Dr, Mississauga,  
 ON L5T 2B3  
**Contact Person:** Derek Radford  
**Email:** [derek@liftnorthamerica.com](mailto:derek@liftnorthamerica.com)  
**Phone:** [416 456 4668](tel:4164564668)