


PRODUCT FEATURES

- Electric power steering
- AC drive controller and DC hydraulic unit
- 24-volt side loaded battery
- Hydraulic assist down pressure on drive wheel
- OPTION : Platform with hip restraints

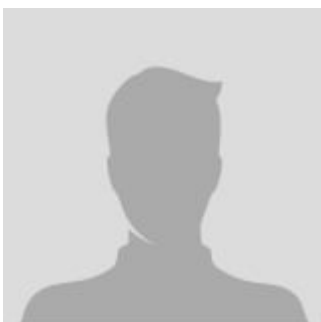
Pallet Jacks and Stackers

Electric Stacker - Counterbalanced - 1200lbs

The main parameter

MODEL	CDD06	CDD12	CDD12	CDD16	CDD16
Controller	CURTIS	CURTIS	CURTIS	CURTIS	CURTIS
Lift motor	DC3 kW	DC3 kW	DC3 kW	DC3 kW	DC3 kW
Steering motor	DC 0.15 kW	DC 0.15 kW	DC 0.15 kW	DC 0.15 kW	DC 0.15 kW
Drive motor	AC 1.5 kW	AC 1.5 kW	AC 1.5 kW	AC 1.5 kW	AC 1.5 kW
Mast type	Standard 2-Stage	Standard 2-Stage	Full free 2-stage	Standard 2-Stage	Full free 3-stage
Fork Size (thickness/width/length)	1.5 / 4 / 42 inch	1.5 / 4 / 42 inch	1.5 / 4 / 42 inch	1.5 / 4 / 42 inch	1.5 / 4 / 42 inch
Overall length	88 105 inch	98.5 118.5 inch	98.5 118.5 inch	116 132 inch	116 132 inch
Operator type	Walkie / Stand On	Walkie / Stand On	Walkie / Stand On	Walkie / Stand On	Walkie / Stand On
Engine type	Electric	Electric	Electric	Electric	Electric
Battery Voltage/Rated capacity	24/270 V/Ah	24/270 V/Ah	24/270 V/Ah	24/270 V/Ah	24/270 V/Ah
Load Capacity	1323 pounds	2645.5 pounds	2645.5 pounds	3527 pounds	3527 pounds
Configuration Number	970	970	910	D970	970
Overall width	40 inch	40 inch	40 inch	40 inch	40 inch
Load Center	20 inch	20 inch	20 inch	20 inch	20 inch
Standard Lift Height	55 79 98 118 130 inch	55 79 98 118 130 142 inch	98 118 130 inch	55 79 98 118 130 142 157 inch	146 153.5 165 177 inch

CONTACT INFORMATION



Lift North America Inc.
 Address 6180 Ordan Dr, Mississauga,
 ON L5T 2B3
 Contact Person: Derek Radford
 Email: derek@liftnorthamerica.com
 Phone: [416 456 4668](tel:4164564668)