



Our hand-guided scrubber drier BD 80/100 W Bp Classic impresses with an excellent overview, superb equipment, robust materials and efficient cleaning performance. As the first battery-operated walk-behind machine from the classic line, it has a powerful traction drive, which climbs slopes effortlessly. Components, which are exposed to extreme stress in tough working conditions, such as squeegee and disc brush head, are made from solid die-cast aluminium. With 80 cm working width, a 100 litre tank and maximum transport and cleaning speed of up to 5 km/h, which can be continuously adjusted, the machine achieves area performances of up to 4800 m². In the case of very stubborn dirt or for decoating, the brush contact pressure can be increased at any time from 40 to 68 kilogrammes. The tried-and-tested and simple operating concept with colour-coded operating elements and the spring clip on the rear of the handle, as well as the Home Base adapter for carrying manual cleaning equipment, offer the user great comfort.

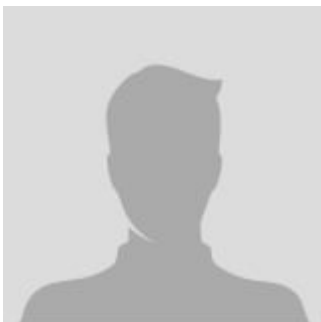
Walk-behind scrubbers

SCRUBBER DRIER BD 80/100 W Bp Classic

The main parameter

Working width of brushes (mm)	810
Working width, vacuuming (mm)	1090
Fresh/dirty water tank (l)	100 / 100
Max. area performance (m ² /h)	3255
Practical area performance (m ²)	2115
Brush speed (rpm)	180
Brush contact pressure (g/cm ² /kg)	28.2 / 47.9 / 53 / 90
Rated input power (W)	max. 1900
Traction motor (W)	300
Battery (V)	24
Battery run time (h)	max. 5
Sound pressure level (dB(A))	63
Weight (with accessories) (kg)	142.3
Weight without accessories (kg)	110.6
Weight incl. packaging (kg)	157
Dimensions (L x W x H) (mm)	1500 x 835 x 1065

CONTACT INFORMATION



Lift North America Inc.
Address 6180 Ordan Dr, Mississauga,
 ON L5T 2B3
Contact Person: Derek Radford
Email: derek@liftnorthamerica.com
Phone: [416 456 4668](tel:4164564668)