



The B 90 R as successor of the BR / BD Trike has an enlarged tank volume, a high manoeuvrability and a small turning radius of 1,6 m. Due to its compact design the machine can be transported easily. It can be transported in elevators. The B 90 R is equipped with ventilation openings for the battery case. Different disc and roller brush heads of Kärcher's new brush head generation can be used in different working widths (55-75 cm). The brush drive operates with star coupling. An easy fresh water filling can be guaranteed. The turbine is protected with an additional washable flat pleated filter against corrosion. Continuous additional metering from the storage tank for cleaning agents. Adaptation of the metering to the degree of soiling during the cleaning. Exact dosage between 0,5 and 3 % (in 0,5 % steps).

Equipment

- Powerful traction drive
- Automatic water stop
- Tin
- Sweeping function
- 2-tank system

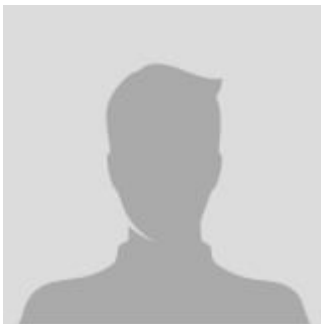
Ride-on scrubbers

SCRUBBER DRIER B 90 R Adv Dose Bp

The main parameter

Working width of brushes (mm)	550 - 750
Working width, vacuuming (mm)	850 - 940
Fresh/dirty water tank (l)	90 / 90
Theoretical area performance (m ² /h)	4500
Practical area performance (m ² /h)	3375
Brush contact pressure (g/cm ² /kg)	20 - 315 / 28 - 35
Battery (V)	24
Traction motor (W)	600
Weight (with accessories) (kg)	152
Dimensions (L x W x H) (mm)	1450 x 800 x 1200

CONTACT INFORMATION



Lift North America Inc.
Address 6180 Ordan Dr, Mississauga,
 ON L5T 2B3
Contact Person: Derek Radford
Email: derek@liftnorthamerica.com
Phone: [416 456 4668](tel:4164564668)