



The B 40 W Bp + D 51 battery powered walk-behind scrubber drier with disc brush and 51 cm working width comes with traction drive and is ideal for easy, safe and convenient handling. New KIK system offers reliable protection against incorrect operation. There are four different squeegees and three different battery versions to choose from. This scrubber drier can also be fitted with a number of other useful optional features. For example, with the automatic Dose cleaning agent dosing unit for economical use of cleaning agent. Or with the Home Base "Mop" or "Box" kits for better transport of additional utensils. Or with "Easy Fill" for filling the fresh water tank and tank rinsing system for easy rinsing of the dirty water tank. Innovative Kärcher accessories, e.g. brushes with various degrees of hardness, different squeegee blades, pad driver plates and disc pads make this scrubber drier ideal for a wide range of cleaning tasks. Comes with 115 AH AGM batteries.

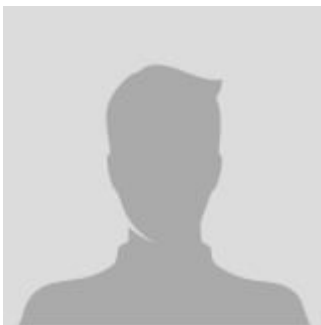
## Walk-behind scrubbers

### SCRUBBER DRIER B 40 W Bp (with wet batteries and D51 head)

#### The main parameter

|                                |    |
|--------------------------------|----|
| Weight (with accessories) (kg) | 87 |
| Weight incl. packaging (kg)    | 87 |

#### CONTACT INFORMATION



**Lift North America Inc.**  
**Address** 6180 Ordan Dr, Mississauga,  
ON L5T 2B3  
**Contact Person:** Derek Radford  
**Email:** [derek@liftnorthamerica.com](mailto:derek@liftnorthamerica.com)  
**Phone:** [416 456 4668](tel:4164564668)