



With a working width of 120 centimetres, extra large roller brush and large 250 litre tank, the B 250 R + R 120 ride-on scrubber drier is virtually predestined for deep and maintenance cleaning as well as polishing of areas up to 15,000 m². The machine, which is available in different configuration options, still has the necessary agility thanks to its short wheelbase to also demonstrate its qualities in confined areas. On request the eco!efficiency mode also reduces water and energy consumption, thus extending the runtime of the powerful battery (36 V/630 Ah) by up to 20 percent. Various cleaning modes can be conveniently set and adjusted via a large colour display and the brush speed can also be regulated in 3 stages depending on the cleaning tasks. All in all, the use and handling of the B 250 R + R 120 is extremely simple, comfortable and safe. For example, the KIK key system helps avoid operating errors and the EASY Operation switch as well as colour-coded operating elements also facilitate use and handling. On top of everything, the machine can also be connected to our fleet management system Kärcher Fleet on request.

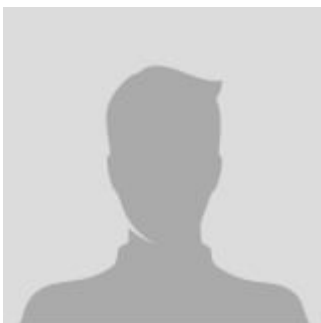
Ride-on scrubbers

SCRUBBER DRIER B 250 R + R 120

The main parameter

Working width of brushes (mm)	1200
Working width, vacuuming (mm)	1420
Fresh/dirty water tank (l)	250 / 250
Theoretical area performance (m ² /h)	9600
Practical area performance (m ² /h)	7200
Brush speed (rpm)	600 - 1200
Brush contact pressure (g/cm ²)	230
Battery (V/Ah)	36 / 630
Rated input power (W)	up to 5200
Traction motor (W)	1600
Waste container (l)	24
Sound pressure level (dB(A))	67
Weight (with accessories) (kg)	530
Dimensions (L x W x H) (mm)	1900 x 1260 x 1550

CONTACT INFORMATION



Lift North America Inc.
Address 6180 Ordan Dr, Mississauga,
 ON L5T 2B3
Contact Person: Derek Radford
Email: derek@liftnorthamerica.com
Phone: [416 456 4668](tel:4164564668)