



PRODUCT FEATURES

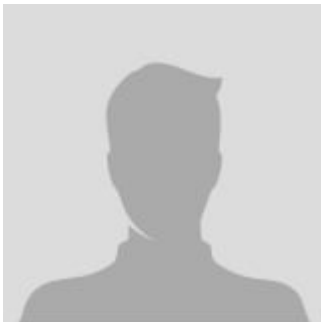
- 36 vdc system
- All AC motors with Zapi systems
- Standard mast 218"(5330mm), 3 stage FFL
- 42" forks
- Load backrest

**Electric Narrow Aisle
Scissor Reach - Single - 3500 to 4000lbs**

The main parameter

MODEL	CQD16X1	CQD18X1
Standard Mast Lifting Height	218 inch	218 inch
Engine type	Electric	Electric
Max. Gradeability (loaded / unloaded)	10/15 %	10/15 %
Load Capacity	3527 pounds	4000 pounds
Configuration Number	GB2R	GB2R
Overall width	43 inch	43 inch
Overall length (without forks)	71 inch	73 inch
Load Center	24 inch	24 inch

CONTACT INFORMATION



Lift North America Inc.
Address 6180 Ordan Dr, Mississauga,
 ON L5T 2B3
Contact Person: Derek Radford
Email: derek@liftnorthamerica.com
Phone: [416 456 4668](tel:4164564668)