



**PRODUCT FEATURES**

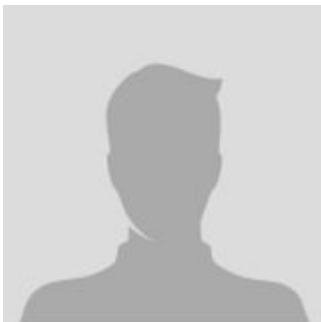
- Full AC system
- Finger tip control
- 14 km/h top speed
- Zapi controllers by Canbus technology
- Electric power steering(EPS)
- Redesigned hydraulic system, 15% increase lifting speed, with buffering cylinder limit system.
- Very low noise operation, barely hear it operating
- Ergonomic cab, ease of operation and full adjustable suspension seat
- Easy access for maintenance
- Easy Battery maintenance, pull out by itself.
- Parking brake assist on slop
- Integral side shift to maximize capacity with tilt function
- 2 modes steering, 180deg or 360deg
- Full LCD Display

**Electric Narrow Aisle  
Mast Reach - Sit-down - 3500-4500lbs**

**The main parameter**

MODEL	CQD16	CQD20
Height of overhead guard (cab)	87 inch	87 inch
Truck body length (fork excluded)	72 inch	76 inch
Mast height (lowered)	91 inch	91 inch
Operator type	Seated	Seated
Truck body width	50 inch	50 inch
Engine type	Electric	Electric
Free lift height	50 inch	50 inch
Battery Voltage/Rated capacity	48/450 V/Ah	48/560 V/Ah
Configuration Number	GB2S	GB2S
Load Center	24 inch	24 inch
Rated Capacity	3527 pounds	4409 pounds
Standard Lift Height	181 inch	181 inch

**CONTACT INFORMATION**



**Lift North America Inc.**  
**Address** 6180 Ordan Dr, Mississauga,  
 ON L5T 2B3  
**Contact Person:** Derek Radford  
**Email:** [derek@liftnorthamerica.com](mailto:derek@liftnorthamerica.com)  
**Phone:** [416 456 4668](tel:4164564668)