


**PRODUCT FEATURES**

- CPD20/25/30/35-GB2Li; CPD30/35-GB3Li
- Lithium battery Technologie with Charger (16hrs+ single charge)
- Full AC drive and Hydraulic
- Curtis controlor
- Hydraulic lever next to operator

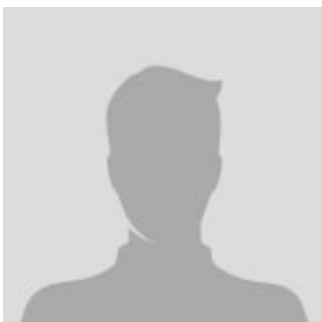
## Electric Lift Trucks

### 4 Wheel Pneumatic - Lithium Battery - 2000 to 7000lbs

### The main parameter

MODEL	CPD10	CPD15	CPD20	CPD25	CPD30	CPD35
Truck body length (fork excluded)	81 inch	81 inch	90 inch	90 inch	100 inch	100 inch
Turning radius	69 inch	69 inch	79 inch	81 inch	88 inch	89 inch
Height with mast extended	159 inch	159 inch	167 inch	167 inch	165 inch	164 inch
Truck body width	43 inch	43 inch	47 inch	47 inch	48 inch	48 inch
Engine type	Electric	Electric	Electric	Electric	Electric	Electric
Max. Lifting height	118 inch	118 inch	118 inch	118 inch	118 inch	118 inch
Battery Voltage/Rated capacity	48/400	48/400	48/500	48/500	80/400	80/400
Wheelbase	54 inch	54 inch	61 inch	66 inch	66 inch	66 inch
Configuration Number	GC1Li/GD1Li	GC1Li/GD1Li	GC1Li/GD1Li	GC1Li/GD1Li	GC1Li/GD1Li	GC1Li/GD1Li
Overhead Guard Height	84 inch	84 inch	85 inch	85 inch	87 inch	87 inch
Load Center	20 inch	20 inch	20 inch	20 inch	20 inch	20 inch
Rated Capacity	2205 pounds	3307 pounds	4410 pounds	5512 pounds	6614 pounds	7716 pounds

### CONTACT INFORMATION



**Lift North America Inc.**  
 Address 6180 Ordan Dr, Mississauga,  
 ON L5T 2B3  
**Contact Person:** Derek Radford  
**Email:** [derek@liftnorthamerica.com](mailto:derek@liftnorthamerica.com)  
**Phone:** [416 456 4668](tel:4164564668)