



- CPDSR15/18/20-GA2; CPDSR15-GB2
- Extra leg room
- Wideview mast
- Hydraulic levers next to the seat
- Standard hydraulic hose and fitting

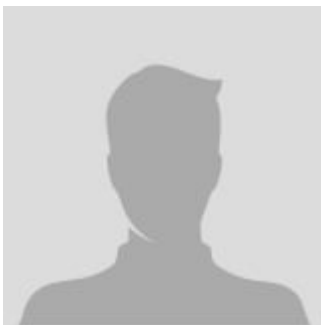
Electric Lift Trucks

3 Wheel - Rear Wheel Drive - 2500 to 3000lbs

The main parameter

MODEL	CPD13SH	CPD15SH
Height with mast extended	158 inch	158 inch
Engine type	Electric	Electric
Battery Voltage/Rated capacity	24/630(630/875) V/Ah	24/720 (720/1000) V/Ah
Length To Fork Face	69 inch	71 inch
Configuration Number	GB2	GB2
Overhead Guard Height	82 inch	82 inch
Overall width	39 inch	39 inch
Load Center	20 inch	20 inch
Rated Capacity	2756 pounds	3307 pounds
Standard Lift Height	118 inch	118 inch

CONTACT INFORMATION



Lift North America Inc.
Address 6180 Ordan Dr, Mississauga,
 ON L5T 2B3
Contact Person: Derek Radford
Email: derek@liftnorthamerica.com
Phone: [416 456 4668](tel:4164564668)