



- CPD15/16/18/20SQ-GB2Li

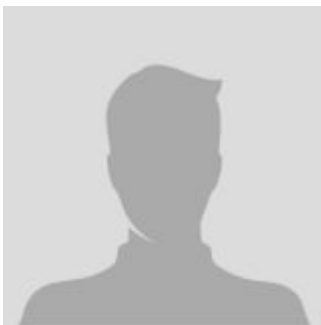
Electric Lift Trucks

3 Wheel - Front Wheel Drive - Lithium Battery - 3000 to 4000lbs

The main parameter

MODEL	CPD20	CPD18	CPD16	CPD15
Engine type	Electric	Electric	Electric	Electric
Total Approximate Weight (without battery)	7782 / 6790 pounds	7275 / 5291 pounds	7071 / 6129 pounds	6404 / 5523 pounds
Outside Turning Radius	64 inch	63 inch	59 inch	59 inch
Length To Fork Face	78 inch	77 inch	73 inch	73 inch
Mast Tilt Angle, F/R	5/7°	5/7°	5/7°	5/7°
Wheelbase	55 inch	55 inch	51 inch	51 inch
Load Capacity	4409 pounds	3858 pounds	3527 pounds	3307 pounds
Configuration Number	SQ-GB2Li	SQ-GB2Li	SQ-GB2Li	SQ-GB2Li
Overhead Guard Height	80 inch	80 inch	80 inch	80 inch
Overall width	40 inch	44 inch	42 inch	42 inch
Load Center	20 inch	20 inch	20 inch	20 inch
Standard Lift Height	130 inch	130 inch	130 inch	130 inch

CONTACT INFORMATION



Lift North America Inc.
Address 6180 Ordan Dr, Mississauga,
 ON L5T 2B3
Contact Person: Derek Radford
Email: derek@liftnorthamerica.com
Phone: [416 456 4668](tel:4164564668)