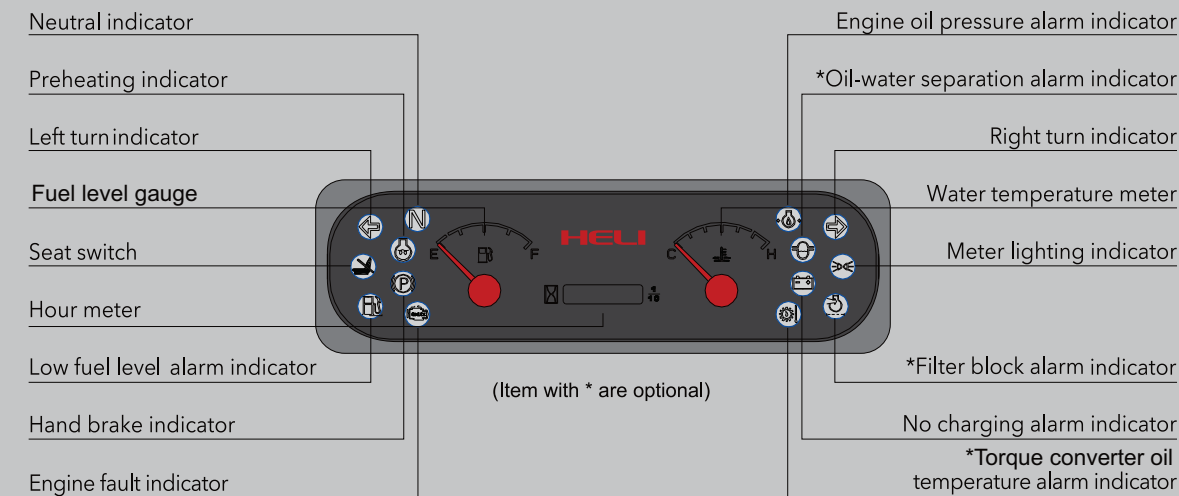


Heli Dash Display



Heli's display is conveniently placed on the dash so operator can monitor truck's working condition, fault codes and other vital information

Standard Configuration			
Horn	Transmission oil filter	Overhead guard rain cover	2 forward headlights
Control valve	Cable type parking brake	Standard forks	Hydraulic oil dipstick
Oil pressure alarm	Metric tool case	Hydraulic oil filter	Overhead guard
Hydraulic-powered steering	Complete front-rear light package	Wide view mast	Torque converter oil dipstick
Load backrest	Back-up alarm	Pneumatic tires (standard)	Combined instrument panel
Rear view mirror	Adjustable steering column	Tow pin	
Optional			
Cab	Solid tires	Wind shield w/wiper	Torque converter oil temperature meter
Amber flashing light	Non-marking tires	Fire extinguisher	Customer colors
Suspension seat	Wide carriage	Rear working light	Attachments



ANHUI HELI CO., LTD.

Corporate: www.helichina.net
US East: www.heliamericas.com
US West: www.industrialforklifts.com
Canada: www.heliforklift.ca

AUTHORIZED DEALER

HELI
LIFTING THE FUTURE

TOP 10 FORKLIFT MANUFACTURER
IN THE WORLD

CPCD20-35 & CP(Q)YD20-35

Heli H3 Series Features *Improved performance, superior quality*



> Ergonomics

- > Vibration isolators separate the operator compartment from the main frame and the engine/transmission which absorb the truck's vibration for increased operator comfort
- > Engine performance and repositioned hydraulic pump offer quieter and smoother operation and less noise
- > Improved hydraulic control functions also reduce noise and increase performance

> Operator Comfort - Visibility

- > Operator compartment has been enhanced by creating more foot and leg room with plenty of head room under the overhead guard
- > Visibility has been improved with narrower mast channels and more open overhead guard
- > Higher contrast LED display makes it easier to see in all lighting conditions
- > Comfortable suspension seat is standard with full adjustment for different operators
- > Low, wide step and grab handle make for easy entry to operator's compartment
- > Controls and park brake are within easy reach to reduce operator strain

> Safety

- > All Heli forklifts for North America meet ANSI B56.1 Safety Standard for Powered Industrial Trucks as well as meeting requirements for CE approval
- > All Heli forklifts come standard with Operator Presence System
- > Optional rear grab handle and horn button allows operator to safely drive in reverse
- > Strobes, Beacons or Blue Lights and Alarms are all available as required

> Increased Productivity

- > Smaller turning radius and hydraulic power steering makes for tighter turns and easier steering operation
- > Reliable powershift transmission relieves operator from constantly shifting transmission
- > H3 series hydraulic performance has been enhanced for maximum productivity
- > Ergonomically designed operator's compartment enhances operator productivity, as well as providing safety and comfort

> Improved Performance

- > All aluminum radiator increases air flow and dissipates heat more efficiently
- > Smaller steering wheel with fewer turns lock-to-lock for quicker turns
- > 35% faster lifting speeds over previous generations
- > Lifting cylinders are damped to reduce noise and provide smoother operation
- > Heavy duty powertrain offers exceptional performance in all applications

> Serviceability

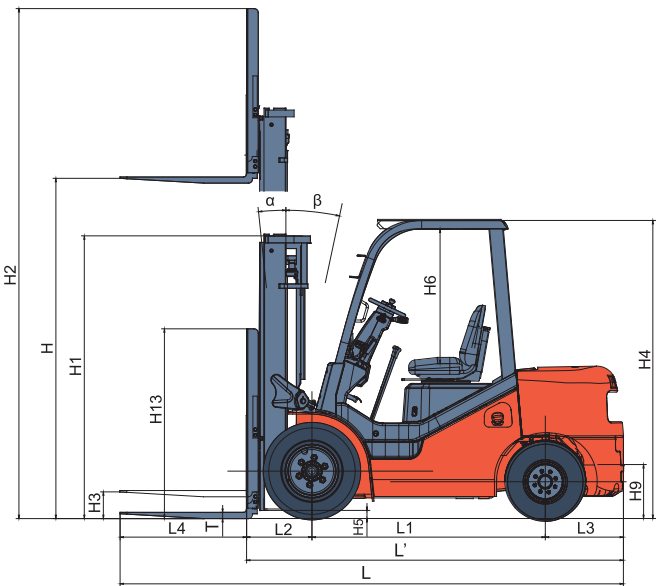
- > Hood opens to an 80 degree angle and floor board is removable for easier access to all important chassis components
- > Electrical system, wiring, and hydraulic hoses are convenient and logically laid out with access from above and below
- > All grease points are accessible, including cast steel axle
- > Lubrication chart is located on front of operator compartment to highlight essential lubrication requirements



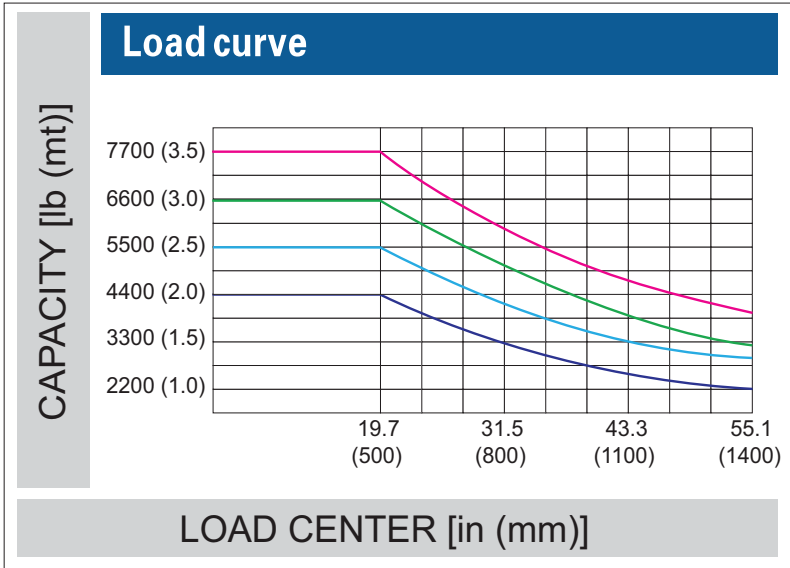
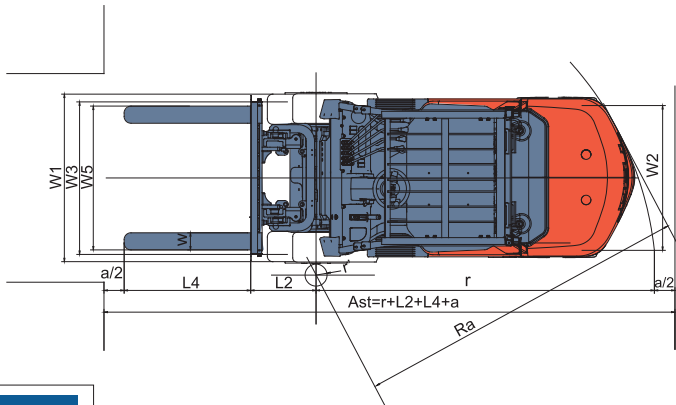
CPQC20-35 & CP(Q)YD20-35



Manufacturer and technical parameters												
Characteristic			HELI									
1.01	Manufacturer				CPCD20/ CP(Q)YD20		CPCD25/ CP(Q)YD25		CPCD30/ CP(Q)YD30		CPCD35/ CP(Q)YD35	
1.02	Model											
1.03	Rated Capacity	lbs	kg		4000	2000	5000	2500	6000	3000	7000	3500
1.04	Load Center	in	mm		24	500	24	500	24	500	24	500
1.05	Operation Type				Seat-type							
Dimension Parameter												
2.01	Max.Lifting Height(without backrest)	H	in	mm	118.2	3000	118.2	3000	118.2	3000	118.2	3000
2.02	Overall Lowered Height	H1	in	mm	78.8	2000	78.8	2000	81.4	2065	85.9	2180
2.03	Max.Lifting Height(with backrest)	H2	in	mm	158.8	4030	158.8	4030	167.3	4245	166.9	4235
2.04	Free Lifting Height	H3	in	mm	6.5	165	6.5	165	6.3	160	6.7	170
2.05	Overall Height(to overhead guard)	H4	in	mm	84.7	2150	84.7	2150	85.5	2170	85.5	2170
2.06	Min.Ground Clearance(under mast)	H5	in	mm	4.5	115	4.5	115	5.3	135	5.3	135
2.07	Overhead guard clearance(from seat face)	H6	in	in	40.6	1030	40.6	1030	40.6	1030	40.6	1030
2.08	Tow Pin Height	H9	in	mm	10.8	275	10.8	275	11	280	11	280
2.09	Backrest Height(From the surface of the fork)	H13	in	mm	39.4	1000	39.4	1000	48.3	1227	48.1	1222
2.10	Overall Length(without Forks)	(L/L')	in	mm	101.7	2580	103.9	2638	108.3	2748	109	2766
2.11	Wheelbase	L1	in	mm	65	1650	65	1650	67	1700	67	1700
2.12	Front Overhang	L2	in	mm	18.6	473	18.6	473	18.8	478	19.5	496
2.13	Rear Overhang	L3	in	mm	18	457	20.3	515	22.5	570	22.5	570
2.14	Overall Width	W1	in	mm	45.3	1150	45.3	1150	48.3	1225	48.3	1225
2.15	Tread(Front Tread/Rear Tread)	(W3/W2)	in	mm	38.2/38.2	970/970	38.2/38.2	970/970	39.4/38.2	1000/970	39.4/38.2	1000/970
2.16	Lateral Fork Adjustment(Outside of Forks)	W5	in	mm	40.6/9.6	244/1030	40.6/9.6	244/1030	41.8/9.9	250/1060	41.8/9.9	250/1060
2.17	Min.Turning Radius Outside	r	in	mm	85.5	2170	88.3	2240	94.6	2400	95.3	2420
2.18	Min.Ground Clearance(wheelbase centre)	r'	in	mm	7.1	180	7.1	180	7.9	200	7.9	200
2.19	Min. Right Angle Stacking Aside Width	Ra	in	mm	86.7	2200	89.8	2280	93.8	2380	94.6	2400
2.20	Mast Tilt(fwd/bwd)	α/β	deg	deg	6/12	6/12	6/12	6/12	6/12	6/12	6/12	6/12
2.21	Fork Dimensions (Length*Width*Thicknes)	L4×W×T	in	mm	36*4.8*1.6	920*122*40	42*4.8*1.6	1070*122*40	42*4.9*1.8	1070*125*45	42*4.9*2.0	1070*125*50
Weights												
3.01	Standard Truck Weight Unload	lbs	kg		7540	3420	8377	3800	9634	4370	10582	4800
3.02	Weight Distribution Rated Load(front/rear)	lbs	kg		10516/1433	4770/650	12081/1808	5480/820	14242/2006	6460/910	16468/1830	7470/830
3.03	Weight Distribution Unload(front/rear)	lbs	kg		3527/4013	1600/1820	3439/4938	1560/2240	3770/5864	1710/2660	4145/6437	1880/2920
Wheels&Tires												
4.01	Wheel Number(x=driven wheel),front/rear								2X/2			
4.02	Tire Type,front/rear								Pnuematic Tire			
4.03	Tire Size,front/rear				7.00-12-12PR/ 6.00-9-10PR		7.00-12-12PR/ 6.00-9-10PR		28×9-15-12PR/ 6.50-10-10PR		28×9-15-14PR/ 6.50-10-10PR	
4.04	Service Brake								Hydraulic-Foot Pedal			
4.05	Parking Brake								Mechanical-Hand Lever			



Ast: right angle stacking aisle width
a: Clearance
L4: Fork Length



NOTE: Capacities shown are reference only. They are computed with mast in vertical position based on 48 inch cube load configuration with center of gravity at true center of cube and standard forks. Longer forks and unusually wide loads can reduce capacity. Consult dealer for any questions about capacities.

Performance																																		
Model			CPCD20		CPCD25		CPCD30		CPCD35		CPCD20		CPCD25		CPCD30		CPCD35		CP(Q)YD20		CP(Q)YD25		CP(Q)YD30		CP(Q)YD35		CP(Q)YD20		CP(Q)YD25		CP(Q)YD30		CP(Q)YD30	
Max.Drawbar pull(Load/unload)	lbf	KN	4280/2740	19/12	4688/2740	21/12	4275/3263	19/14.5	4725/3263	21/14.5	3600/2588	16/11.5	3713/2588	16.5/11.5	4275/3263	19/14.5	4725/3263	21/14.5	3375/2363	15/10.5	3375/2363	15/10.5	3825/3038	17/13.5	4050/3038	18/13.5	3600/2363	16/10.5	3713/2363	16.5/10.5	4050/3038	18/13.5	4500/3038	20/13.5
Max.Gradeability(Load/Unload)	%	%	39/27		36/22		27/21		21/20		20/20		20/20		23/20		21/20		33/26		31/22		31/22		18/21		23/12		23/12		22/13		21/20	
Max.Traveling Speed(Load/Unload)	mph	Km/h	10.6/11.2	17/18	9.9/10.6	16/17	10.6/11.2	17/18	11.2/11.8	18/19	10.6/11.8	17/19	10.6/11.8	17/19	11.8/12.4	19/20	11.8/11.8	19/19	11.2/11.8	18/19	11.2/11.8	18/19	11.8/11.8	19/19	11.8/11.8	19/19	11.8/12.4	19/20	11.8/12.4	19/20	11.8/12.4	19/20	11.8/12.4	19/20
Lifting Speed(Load/unload)	ft/min	mm/s	110/118	560/600	110/118	560/600	98.5/108	500/550	78.8/82.7	400/420	110/118	560/600	110/118	560/600	98.5/108	500/550	78.8/82.7	400/420	98.5/108	500/550	98.5/108	500/550	94.6/106	480/540	80.8/88.7	410/450	112/122	570/620	112/122	570/620	94.6/106	480/540	80.8/88.7	410/450
Lowing Speed(Load/unload)	ft/min	mm/s	88.7/98.5	450/500	88.7/98.5	450/500	88.7/108	450/550	69/78.8	350/400	88.7/98.5	450/500	88.7/98.5	450/500	88.7/108	450/550	69/78.8	350/400	88.7/98.5	450/500	88.7/98.5	450/500	88.7/108	450/550	69/78.8	350/400	88.7/98.5	450/500	88.7/98.5	450/500	88.7/108	450/550	69/78.8	350/400
Engine and Gearbox																																		
Engine Manufacturer/Model		KUBOTA V2403																																
Rated Power	hp/rpm	Kw/rpm	57.9/2400	43.2//2400	57.9/2400	43.2//2400	57.9/2400	43.2//2400	57.9/2400	43.2//2400	45.7/2400	34.1/2400	45.7/2400	34.1/2400	45.7/2400	34.1/2400	45.7/2400	34.1/2400	GAS:64.3/2700 LPG:61.4/2700	GAS:48/2700 LPG:46/2700	GAS:64.3/2700 LPG:61.4/2700	GAS:48/2700 LPG:46/2700	GAS:64.3/2700 LPG:61.4/2700	GAS:48/2700 LPG:46/2700	GAS:64.3/2700 LPG:61.4/2700	GAS:48/2700 LPG:46/2700	67/2700	50/2700	67/2700	50/2700	67/2700	50/2700	67/2700	50/2700
Rated Torque	lb.ft/rpm	Nm/rpm	146.4/1600	198.5/1600	146.4/1600	198.5/1600	146.4/1600	198.5/1600	146.4/1600	198.5/1600	115.1/1800	155.9/1800	115.1/1800	155.9/1800	115.1/1800	155.9/1800	115.1/1800	155.9/1800	GAS:125.5/2400 LPG:124/1600	GAS:170/2400 LPG:168/1600	GAS:125.5/2400 LPG:124/1600	GAS:170/2400 LPG:168/1600	GAS:125.5/2400 LPG:124/1600	GAS:170/2400 LPG:168/1600	GAS:125.5/2400 LPG:124/1600	GAS:170/2400 LPG:168/1600	150/1800	202.7/1800	150/1800	202.7/1800	150/1800	202.7/1800	150/1800	202.7/1800
Cyl. Number-bore*stroke			4-87x102.4									4-87x102.4									4-86.5x100													
Displacement	L	L	2.434									2.434									2.351													
Engine Type			Diesel									Diesel									GAS/LPG													
Emission			Euro IIIB/EPA Tier 4									Euro IIIA/EPA T4I									Tier IV													
Battery Capacity	V/Ah	V/Ah	12/80									12/80									12/60													
Fuel Tank Capacity	L	L																																
Number of speed(fwd/bwd)			60																															
1-1 Power Shift T/M / 2-2 Manual Shift T/M																																		

Wide view basic type mast														
Mast type	Max. lifting height	Loading capacity-loading center 24 inch					Mast Overall Heigh-fork to the ground			Service Weight				Mast tilt angle (Fwd/Bwd) deg
		CPCD20/ CP(Q)YD20	CPCD25/ CP(Q)YD25	CPCD30/ CP(Q)YD30	CPCD35/ CP(Q)YD35	2-2.5t	3t	3.5t	CPCD20/ CP(Q)YD20	CPCD25/ CP(Q)YD25	CPCD30/ CP(Q)YD30	CPCD35/ CP(Q)YD35		
		in/mm	lbs/kg	lbs/kg	lbs/kg	lbs/kg	in/mm	in/mm	in/mm	lbs/kg	lbs/kg	lbs/kg	lbs/kg	
M200	79/2000	4000/1820	5000/2270	6000/2730	7000/3175	59/1500	62/1570	66/1680	7363/3340	8201/3720	9435/4280	10361/4700	6/12	
M250	99/2500	4000/1820	5000/2270	6000/2730	7000/3175	69/1750	72/1820	76/1930	7462/3385	8300/3765	9556/4335	10471/4750	6/12	
M300	118/3000	4000/1820	5000/2270	6000/2730	7000/3175	79/2000	82/2070	86/2180	7539/3420	8377/3800	9634/4370	10582/4800	6/12	
M330	130/3300	4000/1820	5000/2270	6000/2730	7000/3175	85/2150	87/2220	92/2330	7627/3460	8465/3840	9689/4395	10648/4830	6/12	
M350	138/3500	4000/1820	5000/2270	6000/2730	7000/3175	89/2250	91/2320	96/2430	7672/3480	8509/3860	9744/4420	10692/4850	6/12	
M370	146/3700	4000/1820	5000/2270	6000/2730	7000/3175	93/2350	95/2420	100/2530	7716/3500	8553/3880	9766/4430	10736/4870	6/12	
M400	158/4000	4000/1820	5000/2270	6000/2730	7000/3175	100/2550	103/2620	108/2730	7859/3565	8697/3945	9898/4490	10890/4940	6/12	
M425	168/4250	4000/1820	5000/2270	6000/2730	7000/3175	105/2675	108/2745	112/2855	7914/3590	8752/3970	9942/4510	10956/4970	6/12	
M450	177/4500	3400/1620	4200/1905	5200/2385	6000/2815	110/2800	113/2870	117/2980	7969/3615	8801/3995	9971/4535	11000/4990	6/12	
M500	197/5000	3200/1450	3300/1495	4200/1905	5200/2385	120/3050	123/3120	127/3230	8057/3655	8895/4035	10086/4575	11111/5040	6/12	
M550	217/5500	*3200/1450	*3900/1770	*4800/2175	*4800/2175	132/3350	135/3420	139/3530	8245/3740	9082/4120	10460/4745	11563/5245	*3/6	
M600	236/6000	*3000/1360	*3600/1630	*4000/1820	*4000/1820	142/3600	145/3670	149/3780	8344/3785	9182/4165	10571/4795	11651/5285	*3/6	